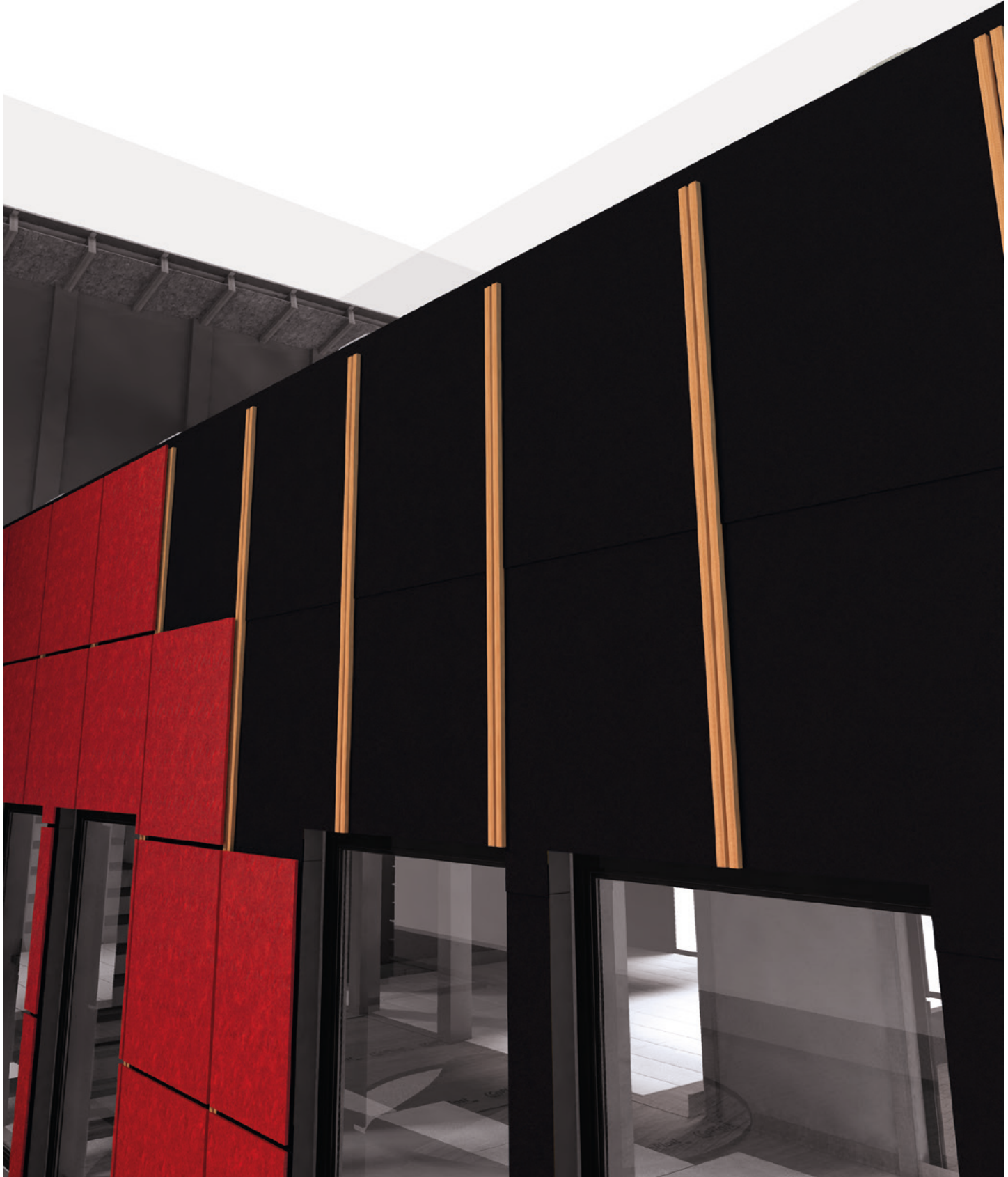
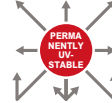


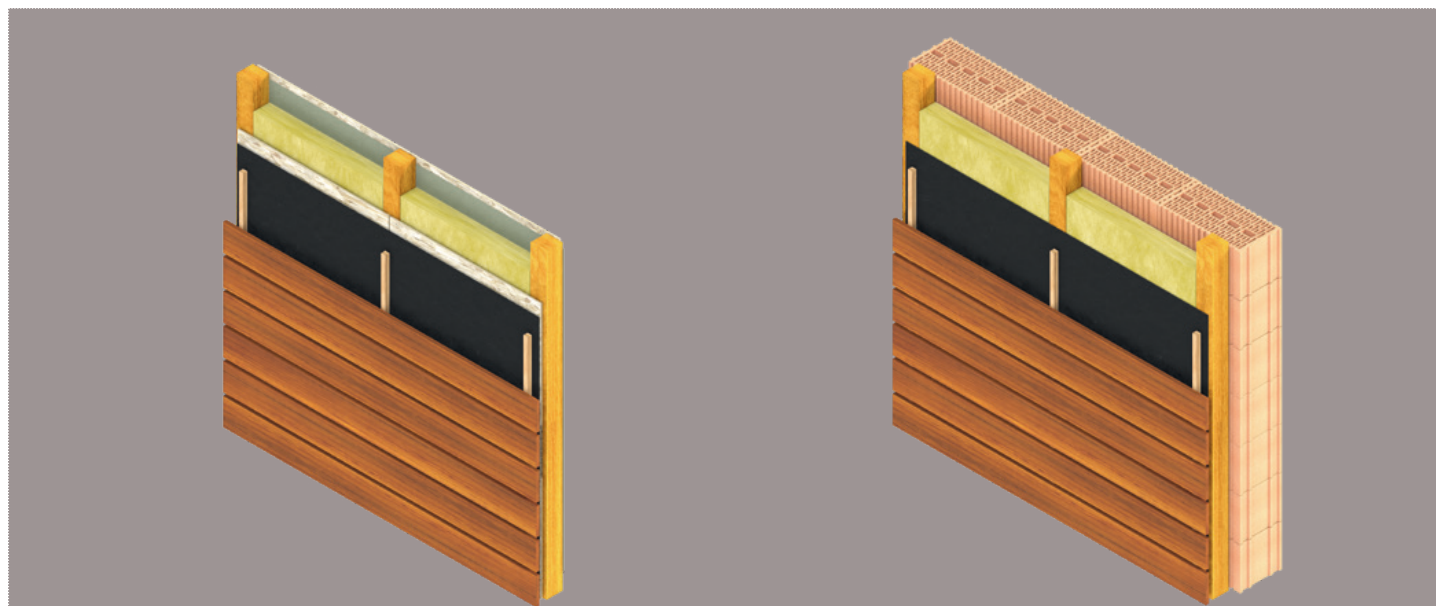
CaWrap UV 200 FR



CE EN 13859-1/2
21



SYSTEMATIC SAFETY AND ENERGY EFFICIENCY



CaWrap UV 200 FR consists of a PES non-woven material and an innovative, diffusion permeable polyurethane coating, which provides long-lasting UV protection and increased fire resistance. The new CaWrap UV 200 FR meets the rising demands for increased fire protection. Driving rain or snow are effectively kept out by the insulating layer. The smooth surface of the façade membrane allows incident or infiltrating moisture to safely and securely run off.

The generally recognized rules of manufacturers, the CaPlast processing guidelines, the relevant standards, as well as the requirements of the GEG (Building Energy Law) and other applicable directives in the most recent version must be followed for processing. In any case, the requirements of DIN 18516-1 must be followed and implemented.

We reserve the right to make technical changes in the interest of progress or due to technical production reasons.

FIELDS OF APPLICATION

For all non-bearing, rear ventilated façades

Maximum proportion of joints 40%
and a maximum joint width of 50 mm

BENEFITS

Increased fire resistance

High level of UV resistance

High levels of openness to diffusion

Protects the insulation from flying snow and driving rain

Moisture that accrues can be channelled away securely

Quick and cost-effective to work with

Wind resistant surface

Black surface

TECHNICAL DATA

Weight (g/m²)	195 ± 10%
Fire behaviour class	Bs1 d0
Resistance to water penetration	W 1
s _d -value (m)	0.13 ± 0.03
Tear resistance L/T (N/5 cm)	340/240 ± 30
Elongation L/T (%)	50/70 ± 15
Nail tear resistance L/T (N)	210/300 ± 30
Resistance to water pressure (cm WS)	> 400
Temperature resistance (°C)	- 40 to + 80
Outdoor exposure (UV)	with a 10-year warranty*
Roll width/Roll length (m)	1.50/50 3.00/50

* Applies only to part open façade membranes with a maximum joint proportion of 40% and a maximum joint width of 50 mm.

PROS C 11/22 EN